

Timy Driver Update

Unfortunately, the API of the new USB driver is not compatible to the old one. In order to be able to use the new versions of the programs (ComToFile from V 2.75, Timy USB update from V0.3), you have to make a driver update.

ATTENTION:

If old versions of this programs are installed, you have to remove them first.

Go to Start/Settings/Control Panel/Add/Remove Programs and click “remove” on the corresponding program.

It is not possible to use old and new versions of these programs at once.

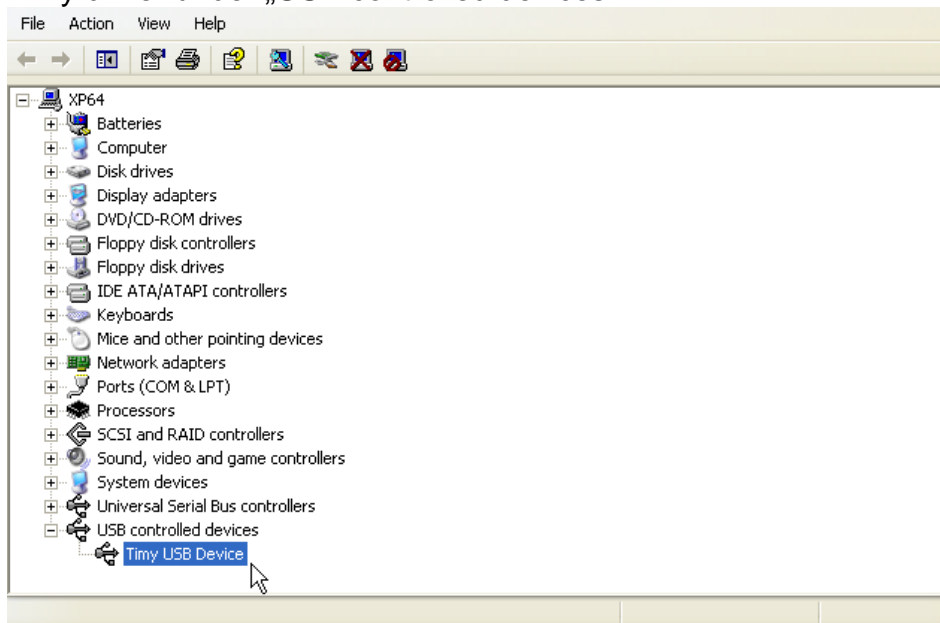
Remember: New driver – new software. Old driver – old software

Note:

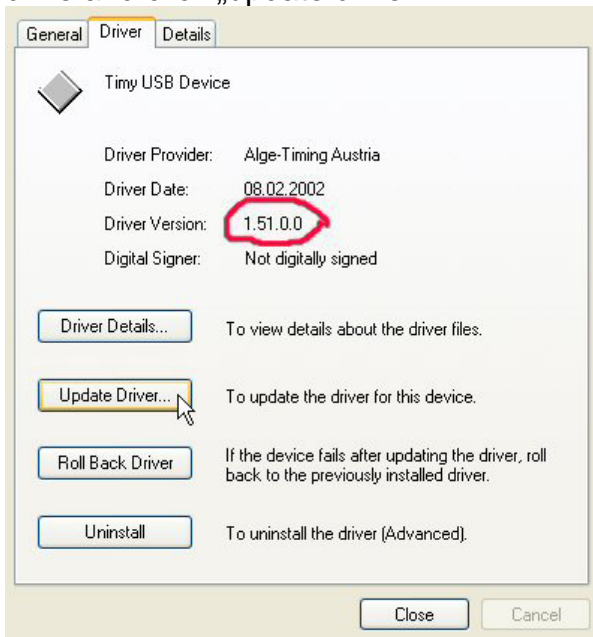
By installing the software of these programs, the driver installs automatically. After removing the old versions, you should install the new ones. This will make the driver installation easier.

For the installation you need administrator rights!

1. Connect the Timy to a free USB port.
2. Go to: Start/Settings/Control Panel/System/Device Manager. You can find the Timy driver under „USB controlled devices“.



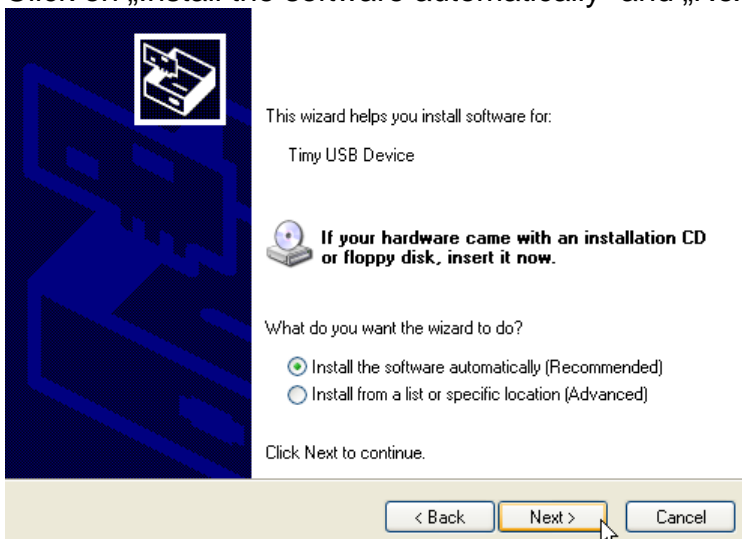
3. If there the old driver is still installed, put your ALGE CD into your CD-ROM drive and click „update driver“.



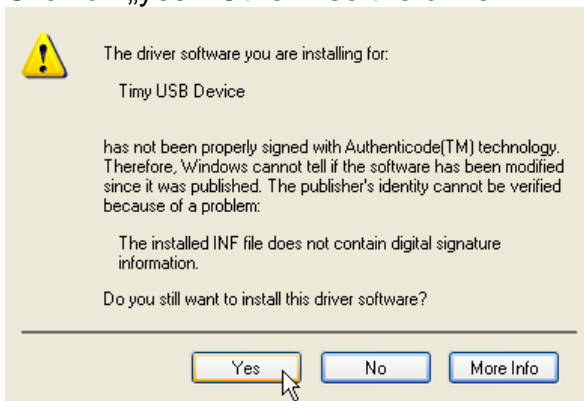
4. Click on „No“ and then „Next“



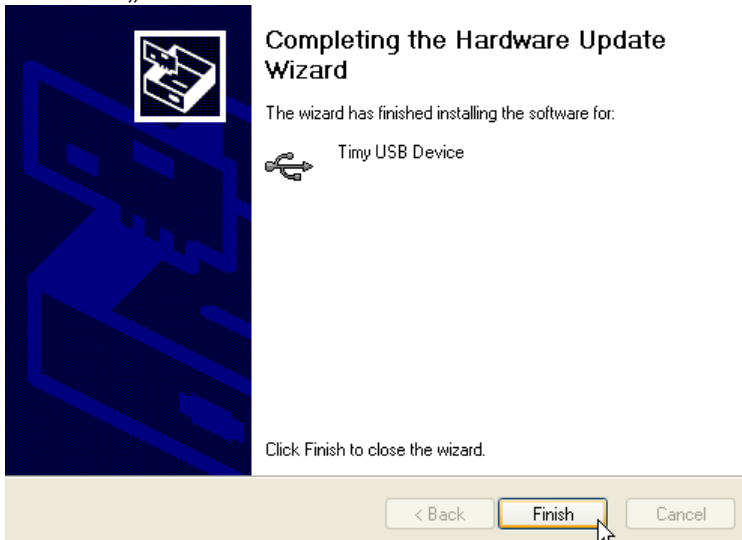
5. Click on „Install the software automatically“ and „Next“



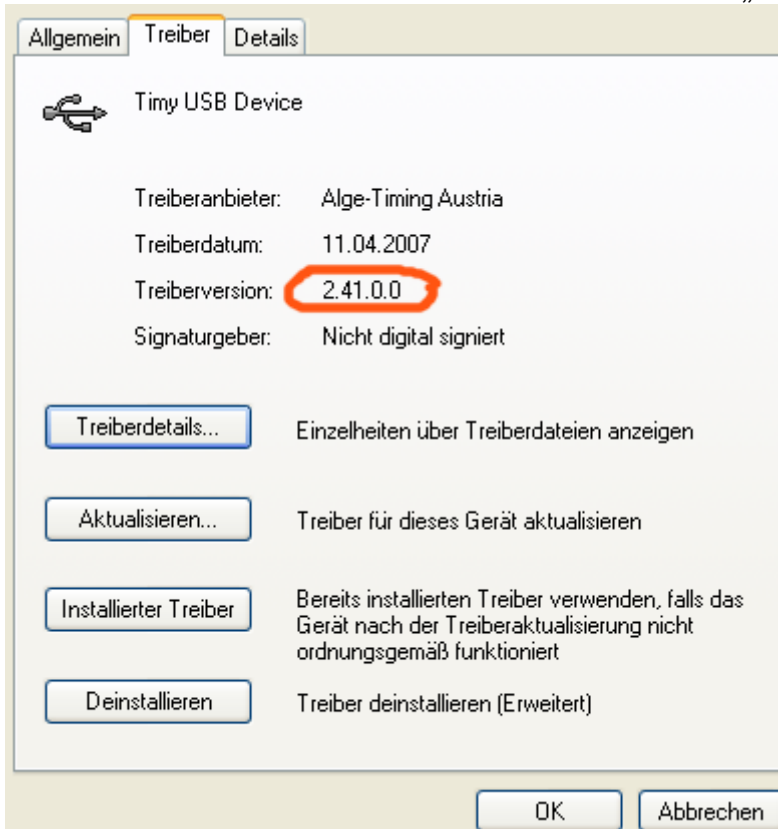
- Click on „yes“. Otherwise the driver will not be installed!



- Click on „Finish“



- The driver version should now be 2.41.0.0. Click on „OK“.



- Now the new driver can be used.